

New York Arts Journal

"Reviews" February 1979, pg. 35

By Don Gray & Jessie Benton Gray



*"Shadows"*

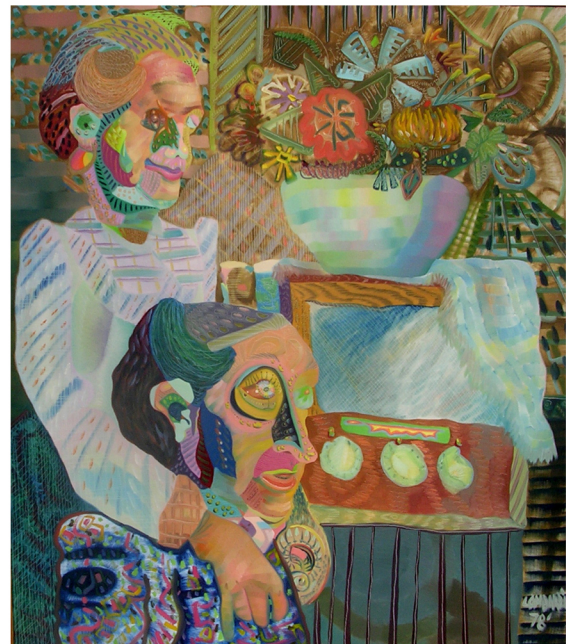
Lombardi's surrealistic, dream-like works combine the wildly visionary, unusual combinations of figures and animals and elaborate color-texturing of the entire picture surface that has a certain convulsive, obsessive quality. Some use of photos is apparent, though only as a starter, to be distorted or elaborated upon by the artist's imagination. Kukla, Fran and Ollie make their appearance in one picture, though they are among the least elaborated in the show. Perhaps they are an unusual enough combination in reality. "Shadows" and "Listening to the Radio" are key pictures of this very striking, almost demonic, type.



Shadows (1978)

oil on linen

54" X 48"



Listening to the Radio (1978)

oil on linen

48" X 42"